



# AUTOMATIC YARD WATERING SYSTEM INSTRUCTION MANUAL

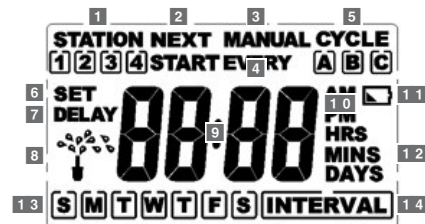
- Controls up to 4 stations
- Up to 3 start times per day
- Waters from 1–240 minutes per start time
- Water pressure: 10 psi – 80 psi
- For outdoor use with cold water only

Model 27752

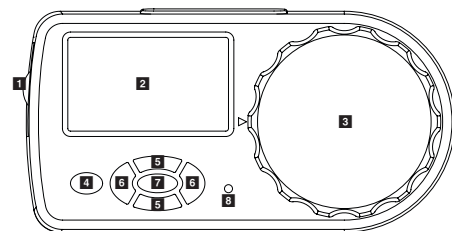
PN 27752-24 Rev C

© 2008 Orbit Irrigation Products, Inc. All rights reserved. All trade names are registered trademarks of respective manufacturers listed.

Orbit® Irrigation Products, Inc.  
North Salt Lake, UT 84054  
1-800-488-6156  
www.orbitonline.com



- 1 Watering stations
- 2 Indicates when next watering cycle will start
- 3 Manual watering is on
- 4 How often timer will water in interval mode
- 5 Cycle start times
- 6 Timer is in set mode
- 7 Rain delay is on
- 8 Timer is watering
- 9 Clock, start time, and watering duration
- 10 AM or PM for clock and start time
- 11 Low battery
- 12 Indicates numbers in clock section as hours, minutes, or days
- 13 Days of the week
- 14 Interval watering mode



- 1 Battery tray
- 2 LCD screen—displays setting and watering program for timer
- 3 Function dial—turns to set watering program
- 4 CLEAR button—clears individual settings of program
- 5 + – buttons—advance or reverse settings
- 6 < > buttons—move cursor to different settings
- 7 ENTER/ MANUAL button—selects setting or turns on rain delay when in AUTO
- 8 RESET—clears all programmed settings

## INSTALLATION

- Attach manifold to an outdoor hose faucet.  
Recommended: secure manifold to wall using the mounting hardware and instructions provided
- Attach up to 4 valves to manifold ports
- Connect valve plugs to corresponding timer outlets
- Program timer to desired specifications
- Slide timer onto mounting bracket of manifold
- Turn hose faucet on

### Mounting Manifold To Wall

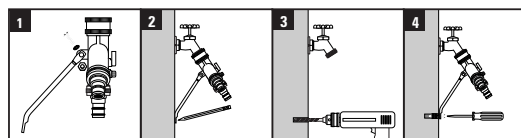
- Use nut and bolt to attach brace to manifold
- Mark where brace touches the wall

For masonry

- Drill a 1/2 in. hole
- Insert lag shield and attach brace using 1/4 lag screw

For stucco

- Drill 5/16 in. hole
- Insert plastic anchor and attach brace using #14 round head screw



### Installing The Batteries

- Remove the tray on the side of the timer by sliding it out
- Insert two AA (1.5V) alkaline batteries (not included) and replace the tray

Low battery icon will appear when batteries need replacing. Replace batteries within 30 seconds or timer programming will be lost.

Tip: Remove batteries when timer is not in use for extended periods.

## PROGRAMMING

Rotate the dial to positions indicated for setup

### 1. Set Clock

- Press the + button to advance clock time (hold button for quick advance). Press the – button to reverse clock time (hold button for quick reverse).
- Press ENTER or turn the knob to accept clock time

### 2. Set Day

- Use the < and > buttons to move cursor over current day
- Press ENTER or turn the knob to accept day

### 3. Start Time

Each start time cycles through all watering stations

- Use the < and > buttons to select start time A, B, or C
- Press ENTER to edit the start time
- Use the + and – buttons to set desired start time
- Press ENTER to accept the setting
- Repeat steps 1 through 4 for cycles B and C if desired

To clear a start time

- Use the < and > buttons to move the cursor over cycle letter
- Press ENTER to select
- Press CLEAR

### 4. Run Time

Set watering duration from 1 to 240 minutes for up to 4 stations

- Use the < and > buttons to select start time 1, 2, 3, or 4
- Press ENTER to select
- Use the + and – buttons to set desired run time
- Press ENTER to accept the setting
- Repeat steps 1 through 4 for stations 2, 3, and 4 if desired

### 5. How Often

Select which days to water or every 1 to 14 days. All stations and cycles will water on selected days

- Use the < and > buttons to select which days to water Sunday through Saturday
- Press ENTER after each selected day. [ ] will appear around days selected to water
- Press CLEAR to deselect a day

Or select INTERVAL. 1 is every day, 2 is every other day etc. up to 14 days

- Use the + and – buttons to increase and decrease the number of days
- Press ENTER to accept the setting

### 6. Auto

Timer waters according to programmed start time(s), run time(s), on the programmed day(s) or interval

### Manual Watering

Water without interrupting the set cycle

- Press the MANUAL button when dial is turned to AUTO
- Press ENTER to cycle through all stations once as previously set in RUN TIME section. Or, use the < and > buttons to select which station(s) to manually water
- Press ENTER when cursor is over desired watering station
- Use + and – buttons to set from 1 to 240 minutes

Screen will flash between clock and minutes remaining on cycle. To remove manual watering and resume programmed cycle press CLEAR

### Rain Delay

Delay watering cycle during precipitation to conserve water

- When in AUTO, press + button for 24 hrs, 48 hrs, or 72 hrs  
Screen will flash between clock and hours remaining before programmed cycle resumes. To remove rain delay, press CLEAR, or turn dial to OFF and then back to AUTO

### Off

Off stops the timer from watering and clears Rain Delay

## TROUBLESHOOTING

**Water does not come on at desired time. Check if:**

- Clock is set to correct time including AM and PM
- Start time is set to desired time including AM and PM
- Start times begin after previous watering cycle has run through all stations and set durations
- Rain Delay is on (DELAY appears on left side of screen if on)

**Timer does not water. Check if:**

- Timer is set to AUTO
- Batteries are low
- Clock is set to correct time including AM and PM
- Rain Delay is on (DELAY appears on left side of screen if on)
- Valve plugs are inserted in the correct corresponding timer outlet

**Water won't turn off. Check if:**

- Watering duration is set to desired time
- Start times begin after previous watering cycle has run through all stations and set duration



### Product Includes:

- A** (1) 7 1/4 in. Brace
- B** (1) Hose Washer
- C** (1) #14 Round Head Screw
- D** (1) 1/4 in. Lag Screw
- E** (1) Bolt
- F** (1) Lock Washer
- G** (1) Nut
- H** (1) Lag Shield (for masonry)
- I** (1) Plastic Anchor (for stucco)
- J** (2) End Plugs

